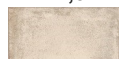




**Boston**

**11x22,5x1**



Downtown  
NB1101 ■ T063



West  
NB1102 ■ T063



East  
NB1103 ■ T063



North  
NB1104 ■ T063



South  
NB1105 ■ T063

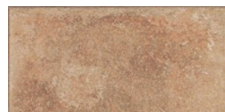
**22,5x45x1**



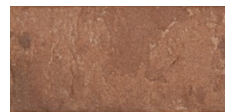
Downtown  
NB4501 ■ T030



West  
NB4502 ■ T030



East  
NB4503 ■ T030

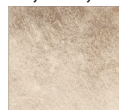


North  
NB4504 ■ T030

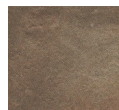


South  
NB4505 ■ T030

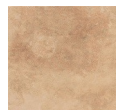
**22,5x22,5x1**



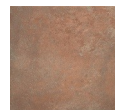
Downtown  
NB2201 ■ T030



West  
NB2202 ■ T030



East  
NB2203 ■ T030

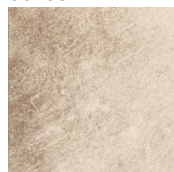


North  
NB2204 ■ T030

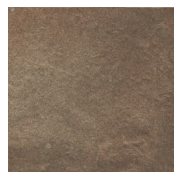


South  
NB2205 ■ T030

**36x36x1**



Downtown  
NB3601 ■ T063



West  
NB3602 ■ T063



East  
NB3603 ■ T063

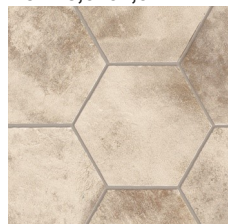


North  
NB3604 ■ T063

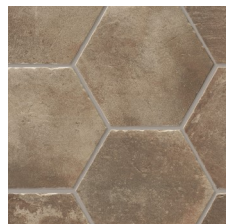


South  
NB3605 ■ T063

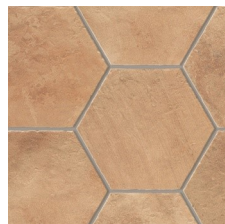
**Hex 28,5x32,5x1**



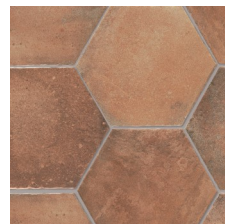
Downtown  
NB2801 ■ T133



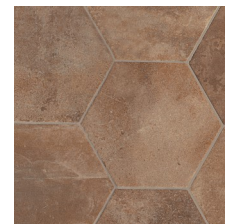
West  
NB2802 ■ T133



East  
NB2803 ■ T133

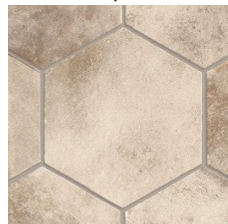


North  
NB2804 ■ T133

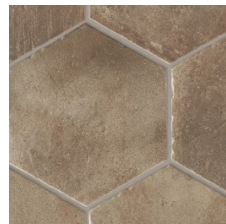


South  
NB2805 ■ T133

**Hex 36x41,5x1**



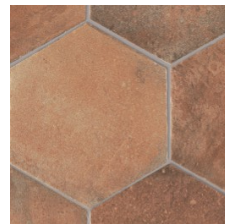
Downtown  
NB4101 ■ T090



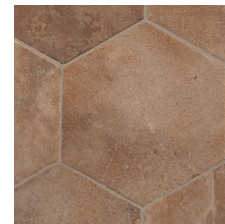
West  
NB4102 ■ T090



East  
NB4103 ■ T090



North  
NB4104 ■ T090



South  
NB4105 ■ T090

Boston	Besteleenheid	st./m <sup>2</sup>	kg./m <sup>2</sup>	m <sup>2</sup> /pallet	Soort Tegel	Oppervlak
11x22,5x1	20 st./0,5 m <sup>2</sup>	40	20,8	72	PEI4 R12	Mat
22,5x45x1	10 st./1,01 m <sup>2</sup>	9,99	21,1	72,72	PEI4 R12	Mat
22,5x22,5x1	20 st./1,01 m <sup>2</sup>	19,98	20,7	72,72	PEI4 R12	Mat
36x36x1	8 st./1 m <sup>2</sup>	8	20,6	48	PEI4 R12	Mat
28,5x32,5x1 Hexagon	15 st./1,05 m <sup>2</sup>	14,29	18,2	48,3	PEI4 R12	Mat
36x41,5x1 Hexagon	9 st./1 m <sup>2</sup>	9	22,6	48	PEI4 R12	Mat